



2023

# SURVIVAL GUIDE

---



---

Burn in The Forest  
July 26-30, 2023  
Merritt, BC



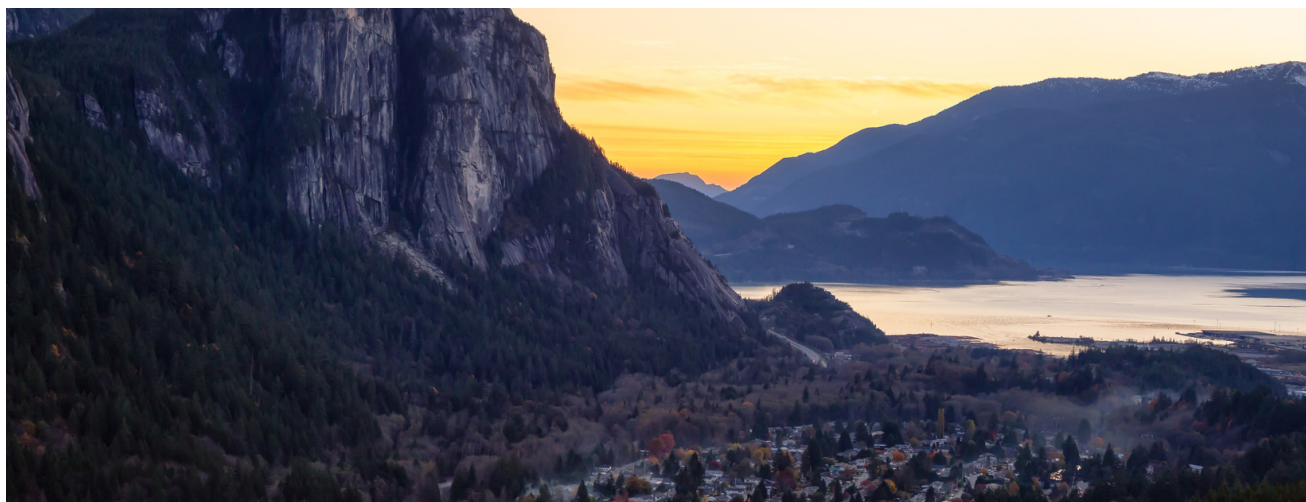


**We are thrilled** to have you join us for an extraordinary adventure rooted in the 10 Principles of Burning Man. BitF, short for "Burn in the Forest," is an annual event inspired by the renowned Burning Man event . As we gather in this unique location in Merritt, BC, the safety of all attendees is paramount while we create an environment where everyone can freely express themselves.

With a rich history spanning over 10 years, BitF has evolved into a vibrant community-driven experience. Participants come together to co-create special experiences, to exercise self-expression and radical inclusivity, while exploring awe-inspiring art installations, interactive theme camps and workshops, performances, and so much more.

This **BitF 2023 Survival Guide** has been thoughtfully curated to provide you with valuable information to safely navigate BitF 2023, including guidance on personal well-being, consent, fire safety, and other crucial elements. We encourage you to actively engage with this survival guide and take responsibility for your own safety, as well as the safety of those around you.

By actively participating and fostering a culture of care, we collectively create a memorable and transformative experience, while also prioritising the well-being of everyone involved. We are excited to embark on this journey with you and look forward to celebrating the magic of BitF while embracing the spirit of the Burner culture!



# Acknowledging the Indigenous Lands and the Nl̓eʔkepmx People

As we come together for BitF 2023, we must acknowledge and show respect for the traditional territory of the **Nl̓eʔkepmx people**. This land stretches from the Fraser Canyon and Princeton in the south, to Cache Creek and Kamloops in the north. The Ntstlatko river, which passes through the BitF site, holds cultural significance, as it flows through two Nl̓eʔkepmx Reservations of the Coldwater Indian Band, continuing on to Merritt and connecting with the Nicola River. These lands have been home to Indigenous communities for generations, and we recognize the importance of honouring their enduring connection.

As we celebrate this year's BitF, and within this context, we invite you to consider the rich history and heritage of the Nl̓eʔkepmx people and other Indigenous communities. We encourage you to engage in meaningful conversations, listen to the voices of indigenous communities, and strive to build respectful relationships. Let us enjoy BitF while being mindful of the deep-rooted connections this land holds for Indigenous communities who have called it home for countless years.



# CODE OF CONDUCT

## Respect Yourself

The environment and experience may push you in different ways than expected. Occasionally, you may feel uncomfortable or out of sorts. We trust that only you can fully understand your own comfort levels and personal boundaries. Please be conscious of your well-being and aware of your own needs. Practice self-care and remember the value of self-reliance in our community, but do reach out to others for support, if you need it.

## Respect One Another

Be aware of your behaviour, choices, and how they impact other members of our community. Keep consent and personal autonomy at the forefront of all your interactions. Check in with yourself and others to ensure mutual respect.

## Respect the Land and Surroundings

There are very few places that allow us to do what our community does. We are privileged to use this space, and we need to take excellent care of it. Our actions will guide the future use of this beautiful site.

**If something doesn't seem right, you are empowered to speak up** and report the situation to the Production Team or the Rangers (they have radios). Producers reserve the right to remove participants who contradict the spirit of the Code of Conduct. The Code of Conduct has been created by the community and we strive to create a healthy and respectful environment for everyone.





## **Assumption of Risk**

You understand and voluntarily assume all risks associated with attending BitF, including but not limited to the risk of injury or death. BitF, its organizers, sponsors, and affiliates shall not be held liable for any harm, injury, loss, or damage incurred during BitF.

## **Personal Responsibility**

You are solely responsible for your own well-being, actions, and choices while at BitF. You are responsible to ensure your own safety and the safety of your property. BitF assumes no liability for any injuries, accidents, or damages that may occur.

## **Self-Sufficiency**

BitF does not provide on-site vending or supplies. You are responsible for bringing everything you need, including food, water, camping gear, and any other necessary supplies. Please support the local economy by purchasing your supplies in Merritt if possible.

## **Release and Indemnification**

You release BitF, its organizers, sponsors, and affiliates from any and all claims, liabilities, actions, or damages arising from your attendance at BitF. You agree to indemnify and hold BitF harmless against any claims brought against it by third parties arising out of your actions or participation at BitF.

## **Compliance with Laws and Regulations**

You are required to comply with all applicable laws, regulations, and policies while attending BitF. Failure to do so may result in immediate removal from BitF, and may subject you to legal consequences.

**Please read this disclaimer carefully and understand its terms before attending BitF. Your participation at BitF signifies your agreement to these terms and your acknowledgment of the risks involved.**



# ABOUT THE SITE

---



## Water

Potable water is available, though it may not be close to your campsite. Bring your own water, or bring a cart!



## Cell Reception

The site has some cell reception. Please don't rely on the site having a phone signal; be prepared for no signal!



## River

There is a river on the site, mostly shallow but with a fast current and potential hazards. Please refer to the safety section regarding swimming in the river. Never wash dishes or use any kind of soap, or other products in the river. Please see *Swimming in the River* below for more details.



The effigy will not be burned this year, possibly next year. No candles, cigarettes, propane fire pits, or open flames of any kind are allowed. Only CSA-certified (unmodified) cooking appliances and outdoor flameless enclosed heaters are permitted\*. Do not ever leave a camp stove or flameless enclosed heater unattended. Please see the section regarding Fire Safety below for more details.

*\*amended July 22, 2023*



# GATE HOURS

---

## Entrance



Pre-registered early arrival:

- Monday, July 24 any time
- Tuesday, July 25 before 9pm

Event Gate Hours:

- Wednesday, July 26th: 11am to 11pm
- Thursday July 27: 11am to 11pm
- Friday, July 28th: 11am to 11pm
- Saturday, July 29: NO GATE HOURS

The gate closes at 11pm each night. Late arrivals will wait until 11am the following morning.

## Exodus



Sunday, July 30th:

- Check out by 1pm for everyone except theme camps, LNT.
- Check out by 5pm for theme camps and everyone else except LNT.

**No ins and outs! Have everything you need when you arrive**





# DIRECTIONS

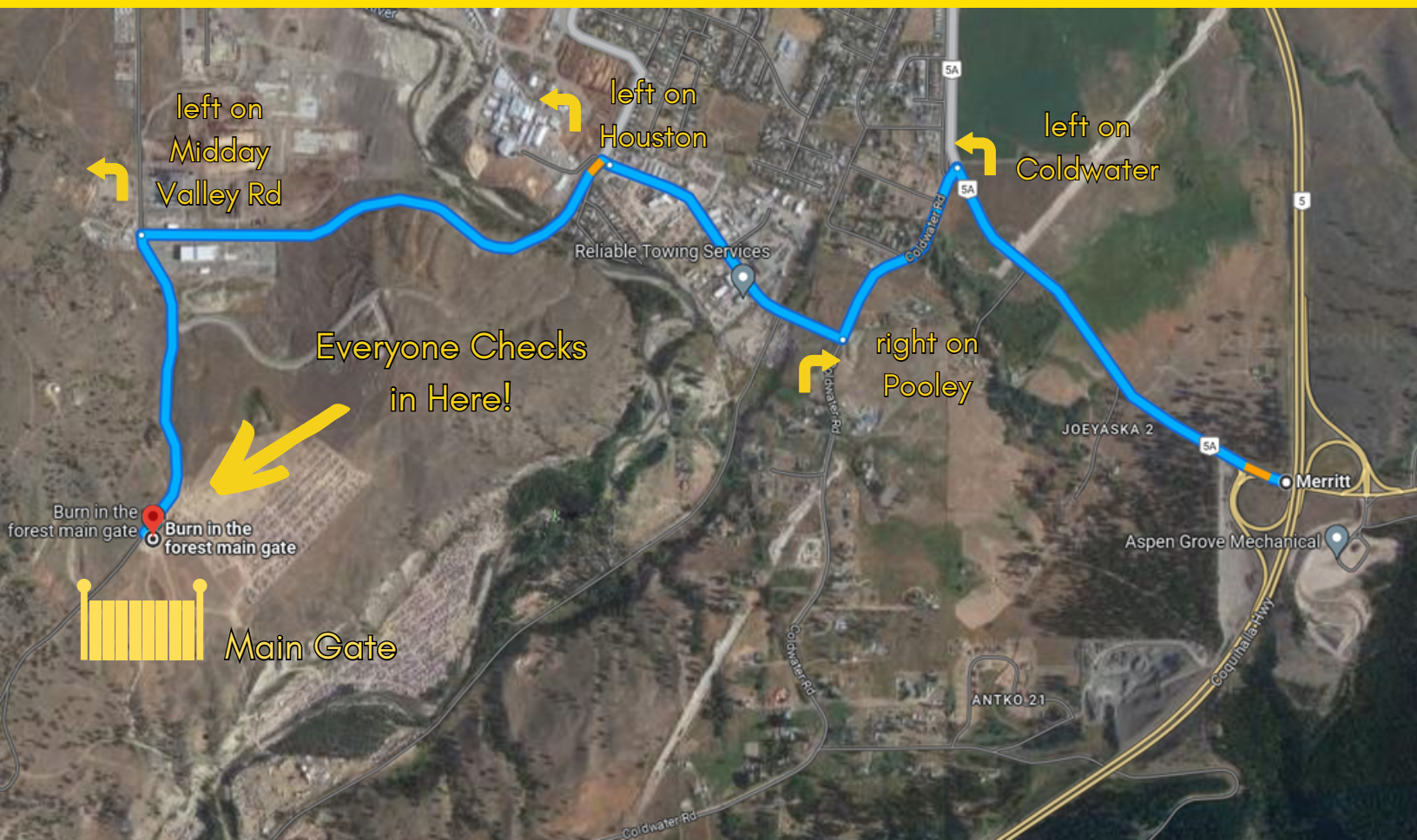
## Main Gate

Everyone must check in at the Main Gate with a ticket and matching ID.

Address: 1000 Midday Valley Rd

Search Google Maps: "Burn in the forest main gate"

Map Coordinates: 50°05'18.2"N 120°47'47.5"W







# ARRIVAL

---

## Main Gate

Upon arrival at the Main Gate our friendly gate volunteers will ensure that everyone has a ticket with matching ID and perform a quick inspection, and put on your snazzy wristband. Gate volunteers will provide information about BitF rules and consent policy and answer any questions.

## Forest Gate

Theme camps, artists and equipment deliveries going to the south, Forest side of the site will check-in at the Main Gate and afterwards go to the Forest Gate. This process takes extra time so please arrive at least a half hour before gate closing time so that our Forest Gate volunteers aren't stuck waiting for you in the dark!

**Tickets are never sold at the gates.**

## Early Arrival

Participants helping with a theme camp, art project, must pre-register for early arrival entry by filling out the [Early Entry Registration](#). Early entry is permitted July 24-25th. The deadline to register is July 23rd. Early arrivals please attend Flow Hub for your wristbands between 6pm and 9pm on Tuesday, July 25th.

## Camping Placement

Designated locations for theme camps, art and production will be kept clear and open camping is not allowed in these areas. Open camping is located in the field on the north side of the river. Please enter from the Main Gate. Greeters, Parking and Onsite Placement will guide you to the designated open camping areas.



# ACCESSIBILITY



BitF believes deeply in radical inclusion. Our home in Merritt on the Coldwater River is relatively flat. However it is also a dusty field with many loose rocks, and it is quite a long walk end-to-end. We are committed to supporting people to meaningfully participate in their BitF community and would love to hear from you about any accessibility needs you may have.

Shuttle service is available to help those with mobility challenges access the site. Details found at: [burnintheforest.com/event/accessibility](https://burnintheforest.com/event/accessibility)

Please contact: [accessibility@burnintheforest.com](mailto:accessibility@burnintheforest.com)



# PARKING

---

## **Parking Policy**

All vehicles must park in the Vehicle Parking Area unless they are being used as a domicile, for a theme camp, or for limited accessibility needs. These vehicles must acquire a Vehicle Camping Pass from the Gate. Please unpack and move your vehicle before setting up camp. Tow vehicles must unhitch and move to the Parking Area.

## **RVs and Large Vehicle Camping**

The RV Camping Area is for any RVs and other large vehicles over 7 meters (25 feet) in length and/or with generators or other loud equipment. We appreciate being considerate of tent campers by keeping your RVs in the designated area.

## **RVs in Theme Camps**

RVs that are part of a theme camp should consider arriving as early as possible to ensure that they are able to navigate to their camp, as some core service roads will become unavailable once the event begins.

## **RV & Tent Groups**

If you are in an RV and want to park in Open Camping outside of the RV Camping Area, please let our parking team know on site. They will assist you and determine whether this is feasible, based on where the rest of your group has set up camp and whether your vehicle can safely navigate to planned spots.

Our goal is to make this work for everyone, but please be prepared to be cool about being directed to the RV Camping Area or Overflow Camping if that plan doesn't work out! We strongly recommend arriving early and during the daylight hours to increase your chances of being able to camp in Open Camping.

For any questions regarding parking, please contact: [flow@burnintheforest.com](mailto:flow@burnintheforest.com).





# WHAT TO BRING

---

- Ticket
- Legal photo ID (must match ticket)
- Sleeping shelter
- Shade structure / parasol / tarp
- Flashlights/headlamps and spare batteries
- Comfortable footwear
- Warm clothes
- Rain gear
- Food and water
- First aid kit
- Earplugs
- Sunscreen
- Sun hat
- Dust mask
- Single ply toilet paper
- Hand sanitizer
- Bug spray

**RADICAL  
SELF  
RELIANCE**





### **In case of emergency**

Should a serious emergency arise, Ranger HQ at Centre Camp will be used as a muster station, and the Production Team and the Rangers will direct you. In the event that Ranger HQ is rendered inaccessible, please muster at the Main Gate, unless otherwise directed.



### **Grey Water**

Bring grey water containers to truly Leave No Trace. Use phosphate free and biodegradable soap to wash up, at least 200 feet away from natural water sources (not near the river!)



### **Food and Water**

Again: you must bring all supplies with you! No in-and-outs are permitted to get supplies. Although there is access to potable water on site, bringing your own water is highly advised.



### **Ice**

Bring ice to keep your food fresh. Because there are no ins and outs, we will have limited ice provided free of charge on Friday at noon by DPW at Centre Camp. Expect hot temperatures! Please practise self-reliance strategies, such as using ice blocks, a dry ice chest, or bringing food you've frozen at home.



### **Shelter**

Bring shelter and protection from the rain, sun, and insects. Prepare for all temperatures. The weather is unpredictable at this location, please be radically self-reliant and prepare for whatever nature throws at you! (Especially wind!)



### **LNT, Garbage and Recycling**

There are no garbage/recycling collection bins onsite... Pack it in, pack it out! Please plan to bring garbage bags, bins, and enough room in your vehicle to leave with your garbage! And don't forget that part of LNT is keeping your campsite tidy, so that cleaning up after exodus is easier.

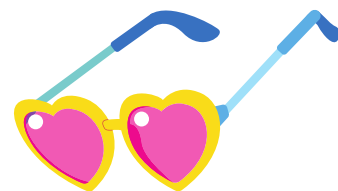


# CLOTHES

**Warm and Dry Clothes:** Merritt has significant temperature changes and occasional rain showers. It can be hot, cold, wet and dry all in one day! Please bring additional warm and dry clothes. Accessories such as hats, scarves and thermal socks are particularly helpful, as well as comfortable, waterproof footwear to keep your feet warm and dry.

**Layering is key:** Dressing in layers allows you to adjust your clothing to changing temperatures. Start with a base layer made of moisture-wicking material to keep you dry. Add an insulating layer, such as a fleece or sweater, for warmth. Finally, top it off with a waterproof and wind-resistant outer shell to protect you from rain and chilly winds.

**Bring rain gear and dust protection:** While Merritt boasts many sunny days, it's wise to be prepared for rain showers. Consider bringing a lightweight, waterproof jacket, poncho, rain pants or skirt. On the flip side, dust can be pervasive and very irritating, especially for those with breathing issues: consider bringing a mask or even a respirator if needed.





# WHAT NOT TO BRING

---



## Glass Containers

Even with the best intentions and safest handling, glass will break.

**No glass containers are permitted.**



## Pyrotechnics and Weapons

The only thing we want to see explode is your mind! Fireworks, and firearms are not allowed.



## Commerce or Vending

Vending is strictly prohibited. We are not a commercial or consumer event, in alignment with the principle of Decommodification. Never advertise or promote any business, band, DJ, etc. at BitF.



## Illegal Substances

Possession, sale, or consumption of illegal substances is a federal offence. Local law enforcement may be present during BitF to enforce these laws. BitF will cooperate fully with the landowner, their representatives, and the authorities



## MOOP (Matter out of Place)

One of the founding principles is that we work together to Leave No Trace (LNT). This means leaving the BitF site in the same or better condition than you found it. This also means that you should NOT bring items that are prone to creating MOOP, such as feather boas, glitter paint and makeup, stick-on gems, loosely sewn sequins, etc. We appreciate your costumes, but if it's leaving a trail of MOOP behind you, be prepared for Burner scorn!



Try on your costumes at home: If you find MOOP from it on your floor or couch, leave it at home!

Eliminate packaging waste: When packing for your trip to Merritt, reduce the amount of single-use packaging. Opt for reusable containers, water bottles, and utensils.





# HOW TO HAVE A GOOD TIME



## Participate!

Your participation is what makes BitF magical! In addition to the 10 guiding Principles that shape burner events, the most significant difference between a "typical" festival and events like BitF is the level of participation. Unlike commercial events where you simply pay admission and become a spectator, at BitF, all activities, stages, theme camps, workshops, art, and performances are independently produced by BitF citizens who bought the same-priced ticket that you did, and offered free of charge for the benefit of the community. YOU are welcome here! Step out of your comfort zone, embrace the experience, and get involved!



## Radical Self-Expression!

Radical Self-Expression is a fundamental part of the Burner experience, aligned with Radical Inclusion! You are encouraged to be yourself or to express yourself as boldly as you desire, while also ensuring everyone feels welcome. So go ahead, let your true self shine! If you find inspiration through exploring and appreciating cultures and practices different from your own, we encourage you to research and be prepared to discuss your choices. Cultural insensitivity can unintentionally exclude community members, so it's important to listen respectfully and accept feedback gracefully. Together, let's strive for inclusivity and expressive freedom!



## Gift your Passions!

The beautiful tapestry of citizen contributions is what makes BitF special. Citizens dedicate their time and efforts to their passions, building and sharing their amazing gifts with others. During BitF, visit Centre Camp to find out where you can share your talents.







# VOLUNTEER



Here are some BitF teams that are often seeking volunteers:

- Sanctuary: Be present for those that need kind support and are seeking a quiet respite.
- DPW: These dedicated individuals arrive early and stay late, setting up the site, pathways, lighting, structures, and assisting with teardown.
- LNT: The Leave No Trace crew acts as ambassadors, promoting responsible LNT practices, and participating in the final MOOP sweep of the site after exodus.

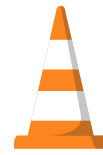




[illegible]

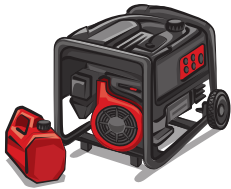
# SAFETY

---



## Radical Self-Reliance

Discover, exercise and rely on your inner resources. While BitF provides foundational resources and oversight to support our community, it is essential that every individual takes responsibility for their own well-being, including exercising responsible judgement and taking care of oneself. We encourage everyone to embrace this spirit of self responsibility and actively contribute to the well being of the entire BitF community.



## Generators

If you bring a generator, you must follow these important rules:

- Place generators on a spillage tray; never allow fuel spillage
- Never run generators late at night or early in the morning (11pm-9am)
- Place your generator far from other campers
- Direct the exhaust away from sleeping areas
- Secure power cables to prevent trip hazards
- Never leave generators running unattended
- Any contaminants on the ground must be cleaned immediately
- Refuelling must take place on a spillage tray



## Swimming in the River

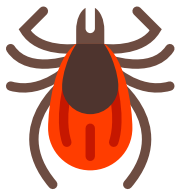
Swimming in the river is at your own risk, and BitF assumes no liability for any accidents or injuries that may occur in or near the water.

- The river serves as a vital habitat for salmon spawning and egg-laying: please avoid wearing bug spray, perfume, lotions, or any skin or hair products while swimming to minimise any negative impact on the river ecosystem.
- Closely monitor children at all times and ensure they are supervised while swimming in the river.
- Additional swimming information or specific instructions may be provided on-site.



## Trees and Shade

While there are some areas with trees, the main camping areas where Burners and theme camps gather are predominantly open spaces. Please come prepared with your own shade structures, as trees for shade are limited, and we must respect and preserve the existing trees and natural surroundings on-site. Please refrain from cutting or damaging trees under any circumstances. We understand the need for suspending items or creating space for your tent, but relying on trees for such purposes is not suggested. Keep in mind that small undergrowth may be cleared to accommodate tents, but cutting down trees is strictly prohibited.



## Bugs

Here are some guidelines to help you navigate buzzing critters:

- Mosquitoes can be pesky, so it's recommended to use repellents containing DEET for effective protection. Cream-based products are a good choice as they tend to stay on the skin longer, even when sweating; but not good for swimming. Stay out of the river after applying anything to the skin.
- In case of bug bites, it's helpful to have After-Bite or similar remedies on hand to calm the itching and irritation.
- Keep your tent bug-free by keeping it zipped tight at all times.
- If you have anaphylactic allergies and/or have allergies to insects, please bring and carry needed medications and/or your Epi-Pen.
- Most ticks encountered at Merritt are wood ticks that do not carry the bacteria responsible for Lyme disease. Regardless, it's always best practice to check yourself for ticks during and after your Burn.



## Fire



No fire performances, or fire art, including poofers. We are limiting fire shows this year to build a solid reputation with BC Wildfire and the local community, and next year we will build on this relationship and hopefully include more options for fire.

- CSA-certified cooking appliances and outdoor flameless enclosed heaters are permitted - be extremely careful and monitor at all times. If costumes, grass, etc. can make contact and instantly catch fire then it's realistically an open flame and is not allowed. Please have a fire extinguisher nearby.





## Driving

Speed limit is 8 km/hr! There are children, and Burners acting like children running around. Always drive slow and safe!



## Rangers

You can find Rangers patrolling BitF in pairs wearing blue BC Rangers t-shirts and with radios. Find the Rangers at Ranger HQ located at Centre Camp. The Rangers are burners who volunteer to help their fellow burners. The Rangers act as a source of information, respond to emergencies, help participants find their way, and mediate disputes, amongst many other duties.



## Medics and Security

Medics and Security are on-site 24 hours a day. Access their help at the medic station or by asking a Ranger or Production member (anyone with a radio). The Medic station is located at Centre Camp. Security is located near the gates.





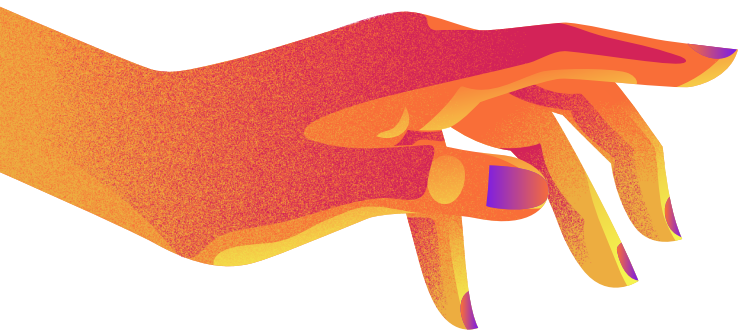
## Harm Reduction

Harm reduction, located at Centre Camp, aims to provide tools, strategies and education to empower people to protect their own health and safety. Harm reduction is guided by kindness, compassion, and respect for all.

Ask Wellness provides on-site education, substance testing and harm reduction supplies.

**Ask Wellness is open:**

**Thursday, Friday, and Saturday from 2pm – 6pm and 8pm – 11pm**

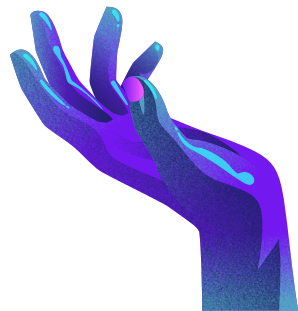


BE KIND  
TO YOUR  
MIND

## Sanctuary

The Sanctuary is a safe space for everyone that provides a quiet, calm, comfortable area to relax. Volunteers provide peer support guided by harm reduction and trauma-informed principles.

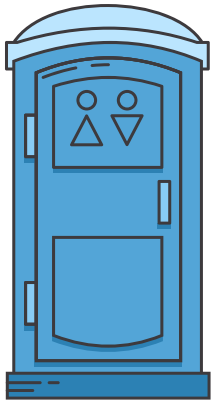
**Sanctuary is available 24/7 from Wednesday at 6pm until Sunday at 12pm**



## Children

An impromptu kid's zone is available for families with children. Never leave children unattended. There may be adult subject matter that is inappropriate for children at BitF.

Be aware that full nudity is permitted in this community.



## Porta-Potties

***If it doesn't come out of your body, do not put it in the porta-potty!***

- The ONLY exception is septic-safe, single-ply toilet paper.
- No garbage, tampons, paper towels, septic approved wipes of any kind.
- No standing/squatting on the seat.
- Keep it clean for everyone's health!

## Lasers

No hand-held or body lasers: Personal hand-held or body lasers of any kind is strictly prohibited. Lasers are only permitted after approval from BitF Production in advance – any unapproved lasers will be confiscated (and/or expulsion may be considered) during the event.

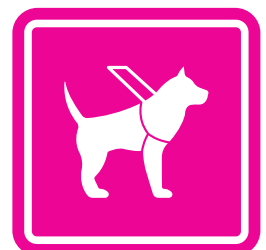


## Drones

All drone operators must register their drones with the BitF organisers before the event. Not during BitF! Failure to comply with the below Policy will result in drone confiscation and/or expulsion from the BitF. Refer to the [GVIAS Drone Policy](#).

## Service Dogs

No pets or animals other than certified service dogs are welcome at BitF. If you plan to attend BitF with your certified service dog, please contact: [safety@burnintheforest.com](mailto:safety@burnintheforest.com) in advance to let us know. Service dogs are to be leashed at all times while at BitF, must not interfere with the enjoyment or safety of others, and owners must clean up after their service dogs.







## Photos and Videos

Photographers are required to obtain written consent before posting images of individuals.

- Images, videos and audio recordings for any commercial purposes are strictly prohibited.
- Photos of nudity are strictly prohibited.

**Always ask for permission before taking anyone's photo.**



## Alcohol and Cannabis

**Consumption is only allowed within a designated campsite.** Minors are never allowed to consume or hold alcohol or cannabis.

Alcohol and cannabis are not allowed to be consumed in public places like roads, fields, or rivers.

The Greater Vancouver Interactive Art Society (GVIAS) complies with all local and Provincial laws.



To maintain a safe and responsible environment for personal alcohol and cannabis consumption at BitF, we require everyone to follow these additional rules:

### Storing Alcohol and Cannabis

- Alcohol and cannabis must be stored in a concealed, semi-secure area that is not easily accessible.
- Never leave alcoholic beverages or cannabis items unattended.
- No obvious transport of alcohol or cannabis between campsites.

### Camp Host Responsibilities

- Camp hosts monitor minors, and the level of intoxication of their campmates.
- Overly intoxicated guests should not consume more alcohol or cannabis.
- Camp hosts should ensure guests do not leave the campsite with alcohol or cannabis.

# Mutant Vehicles

## Registration and Safety Inspections

All mutant vehicles must be registered and undergo safety inspections before they can operate at BitF.



## Restricted Speed and Driving Areas

- Speed limit is 8 kmph. Mutant vehicles must follow specific driving areas designated by BitF Production.

## Sound

- Mutant vehicles that emit sound or play music must follow BitF's sound rules, including limitations on volume levels, noise curfews during certain hours, or specific zones where amplified sound is permitted.

## Lighting and Visibility

- Mutant vehicles must have lighting and illumination for clear visibility. Install functional headlights, taillights, and reflectors to ensure visibility during nighttime operations.

## Respect for Participants and Art Installations

- Exercise respect for the participants, art installations, and theme camps while operating your mutant vehicle. Avoid obstructing art installations or impeding the flow of pedestrian traffic.

## Compliance with Local Laws

- Mutant vehicle operators must comply with all local laws and regulations, including vehicle registration, driver's license, and insurance requirements.



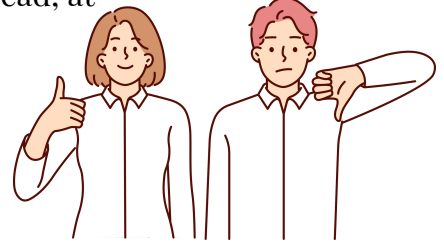
# Sound



Amplified sound in Sound Camps requires pre-approval.

- Sound stages can go to 6 am except Sunday; shutdown is at 4 am on Sunday, with reduced volume from 2 to 4am.
- Theme camps on the north side of the river can go until 2 am for events.
- No amplified sound between 6 am and noon.

Questions about Sound? Contact Peter, the Sound/Technical Lead, at [sound@burnintheforest.com](mailto:sound@burnintheforest.com).



## Boundaries & Consent

At BitF, **consent plays a crucial role** in order to create a space for radical self-expression. To prevent harassment and assault, we must understand and respect each other's boundaries. Everyone must be responsible to navigate the intersection between self-expression and the boundaries of others through clear communication, especially given the diversity of our community..

- **When it comes to interactions, enthusiastic and explicit consent is the only acceptable form of consent. Anything less than a resounding 'yes' is NOT consent. The absence of a 'no' does not equal a 'yes'. Consent is given freely, and can be withdrawn at any time.** Creating an environment founded on consent acknowledges that a person has autonomy over their own body and respects each person's decisions, and knowledge that they know what is best for themselves. Coercion or emotional manipulation to obtain consent is strictly prohibited, and persistent violation of consent boundaries may result in expulsion from BitF.
- **Effective communication** is key. Consent for one thing does not imply consent for anything else. Be aware of your personal boundaries and feel comfortable expressing them. Remember that comfort levels can vary at different times and with different individuals. Always seek and respect the boundaries of others, even if you have prior familiarity with them.
- **Mindfulness regarding substances** is crucial and healthy. According to Canadian law, individuals under the influence of substances are unable to give consent. You must be aware of your own state, and the state of others, when engaging in any interactions with people, artwork and general surroundings.
- If you find yourself in a situation involving threatening behaviour, violence, abuse or assault of any kind (e.g. physical, emotional, sexual, cultural, racial) there are protocols and support systems in place. **Seek assistance from any person with a radio** (Ranger or Production member), visit Ranger HQ at Centre Camp, or go to the Medic Station at Centre Camp for immediate help.





## Evictions

Evictions are final and at the discretion of the Producer On Call.

Offences that may initiate eviction include but are not limited to:

- No wristband or proof of ticket
- Failure to follow the fire or sound policy
- Photography without permission
- Vending or commerce
- Vandalism or property damage
- Leaving children unattended
- Use of pyrotechnics or fireworks
- Possession of a weapon
- Failure to follow code of conduct
- Failure to respect boundaries





We extend our deepest gratitude and a heartfelt thank you to the **Nle?kepmx people**, the original stewards of the land on which BitF takes place – their enduring strength and presence reminds us of the importance of respect, reciprocity, and honouring the land.

We would also like to extend our genuine appreciation to each and every one of you who attends this year's BitF. Your presence and active participation truly makes BitF 2023 a remarkable experience. We are immensely grateful for your enthusiasm, creativity, and commitment to the principles that define our burner community.

**A special thank you and appreciation** for all whose unwavering commitment, passion, and the countless hours of hard work were dedicated to making BitF 2023 an extraordinary experience for everyone! Thank you, to:

- **Theme Camps**, for creating welcoming environments, fostering connection, and contributing to the collective spirit of our event.
- To the **Artists**, whose extraordinary works of art have brought wonder, inspiration, and awe to BitF.
- To the **Sound Camps** for curating exceptional lineups, amplifying the Burner spirit, and becoming the pulsating heart of BitF.
- Also a deep appreciation to **Ask Wellness** for their invaluable contribution to keeping us safe.
- To **Board Members** for your wisdom, support, and commitment to our shared mission.
- To **Committee Members** for your invaluable contributions, support and for upholding the core values of our community.
- To the **Production Team**, whose work behind-the-scenes is the backbone of our event, and for going above and beyond to ensure a seamless and immersive experience for all.
- To **Team Leads** for your dedication, mentorship, and the countless hours you have invested in making our event a resounding success.
- Last, but not least – thank you to the **Volunteers!** Your enthusiasm and positive energy were invaluable. We thank each and every one of you for donating your time and skills to make BitF 2023 extraordinary!

We wish every burner a safe and wonderful experience. May the memories created and the connections forged during BitF 2023 continue to inspire and uplift you in the default world.

# Welcome Home!

– The BitF 2023 Producers

